



# Hellenic Motor Museum

---

THEODORE  
& JOANNA  
CHARAGIONIS  
FOUNDATION  
1977

---

CAPITOL  
MALL  
HELLENIC  
MOTOR  
MUSEUM





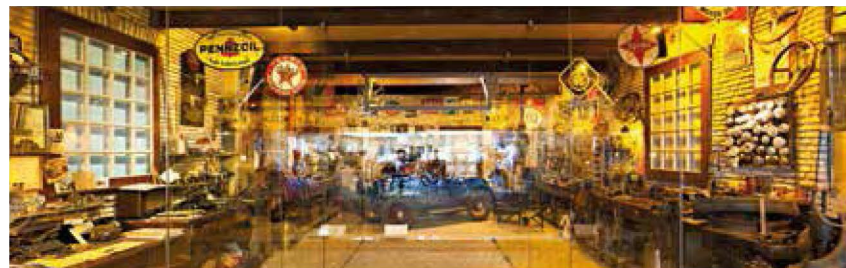
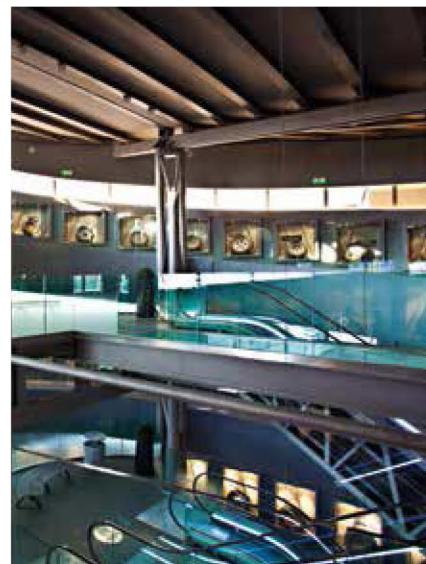


The Hellenic Motor Museum is situated in the heart of Athens, very close to the National Archaeological Museum, in the uniquely designed building of the Capitol Mall cultural, leisure and commercial complex.

The museum, a highly-coveted private collection numbering more than 300 vehicles, covers 3.000 m<sup>2</sup> of the complex in 3 whole floors, dedicated to technology and the 4 wheels evolution...a history that covers almost a century, from an 1895 fire engine from Hungary to a Ferrari 308 GTS of 1980.

Highlights in the collection include Led Zeppelin frontman Robert Plant's 1959 Chrysler Imperial, Sir Lawrence Olivier's Rolls Royce Wraith of 1938, Formula 1 driver Lorenzo Bandini's personal 1953 Lancia Aurelia and the 1979 Cadillac Seville Gucci with its Gucci-designed interior and exterior fittings.

Road safety programmes give to future drivers a basic knowledge combining play and education.



# About the Museum...

# Meetings & Events

A unique place for  
unforgettable events!

Hellenic Motor Museum offers high - tech alternative premises for hosting every type of corporate or social event. Each of the three floors, has been designed in order to be transformed into an event hall and with the appropriate adjustments, to serve either corporate, scientific or sport events, or even wedding receptions, christenings' gatherings or children's parties. In specific:

## Corporate

- Business Meetings
- Seminars
- Product Launches
- Press conferences
- Scientific Conventions
- Presentations
- Trade Shows
- Cocktail Receptions
- Small Exhibitions

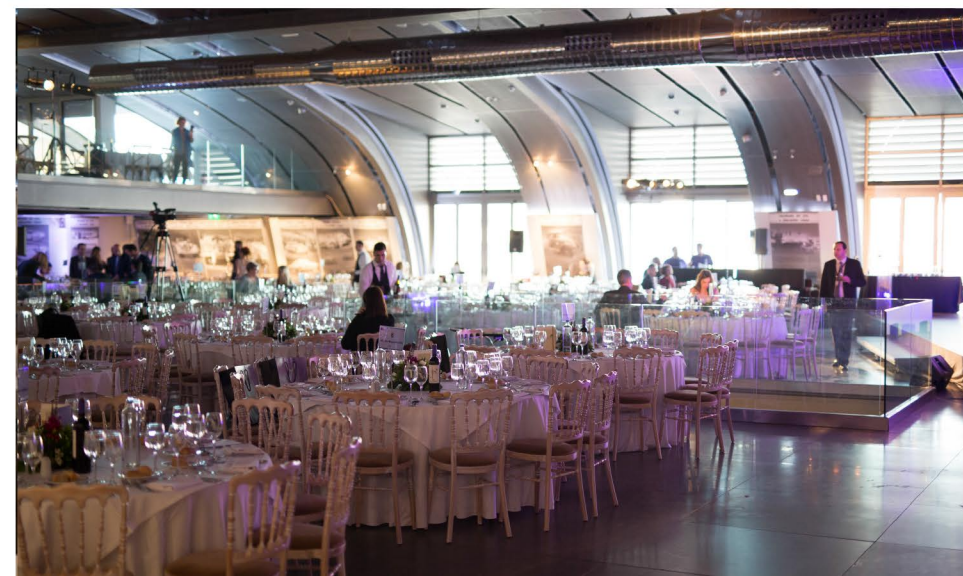
## Social

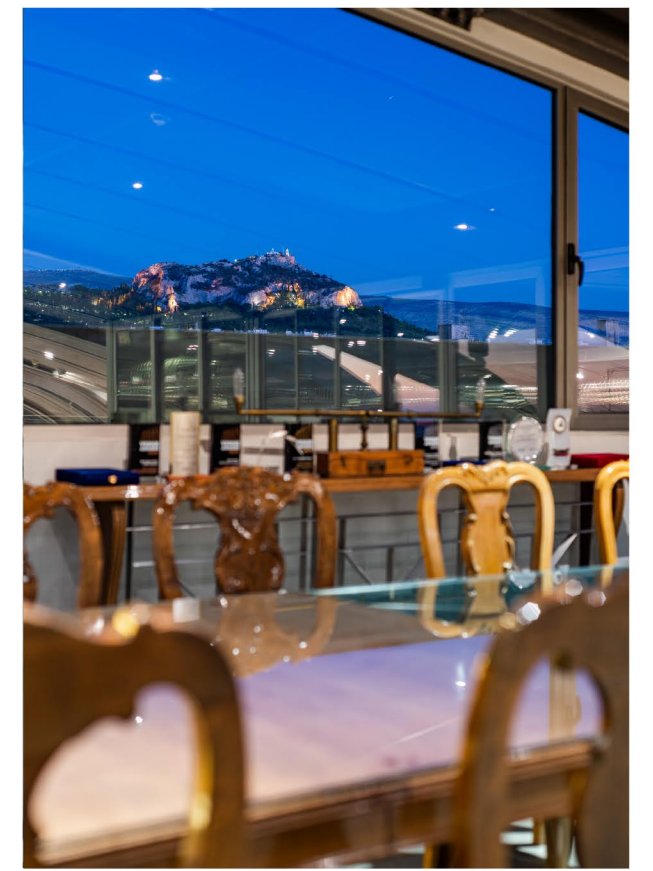
- Fashion Shows
- Wedding Receptions
- Christenings Receptions
- Parties
- Art exhibitions
- Gala dinners
- Cocktails





At the highest level of the building, Capitol Belvedere, can host up to 180 guests in cocktail set up, offering a magnificent view to the Acropolis and Lycabettus Hill, as well as an overall view of the Museum's exhibits.





The 5th floor of the Museum, with 1300 m<sup>2</sup> space and significant height with no columns is the perfect solution for large scale events. In specific:

ROOM	SQM	CAPACITY				NATURAL DAYLIGHT	A/V EQUIP - MENT	INTERNET ACCESS
		THEATER	CLASSROOM	BANQUET	COCKTAIL			
4TH FLOOR	1044	400	330	400	600	YES	UPON REQUEST	YES
5TH FLOOR	1286	500	375	500	800	YES	UPON REQUEST	YES
MUSEUM BELVEDERE	140	80	45	110	180	YES	UPON REQUEST	YES



# Some of our clients so far...



intel.

FREZYDERM

sanofi



Schwarzkopf

L'ORÉAL



foundever



CAMPARI



AVISON  
YOUNG



KONICA MINOLTA



# Location- Access

## Public Transportation

Metro  
"Omonoia" Station – Line 2  
"Victoria" Station – Line 1

## Parking Station

The guests of the Hellenic Motor Museum can use Acropol Parking where spaces are available, spread in seven levels and with entrances in both Ioulianou & 3rd September Strs. Thus, the access is easy from in and out of Attica. The Parking Station operates 24 hours, 7 days a week.

## Points of Interest

National Archaeological Museum  
Pedion Areos

# Contact Details

Hellenic Motor Museum

3is Septemvriou, 33 - 35 Ioulianou  
& 28is Oktovriou  
104 33, Athens, Greece  
T: +30 210 8816187 / 210 7279900  
F: +30 210 7279977  
E: [hmm@charagionis.com](mailto:hmm@charagionis.com)

[www.hellenicmotormuseum.gr](http://www.hellenicmotormuseum.gr)





**CAPITOL**  
MALL

